



# Reflections and Lessons A SA Perspective

Elsona van Huyssteen [evhuyssteen@csir.co.za](mailto:evhuyssteen@csir.co.za)



# Reflections on Value & Lessons

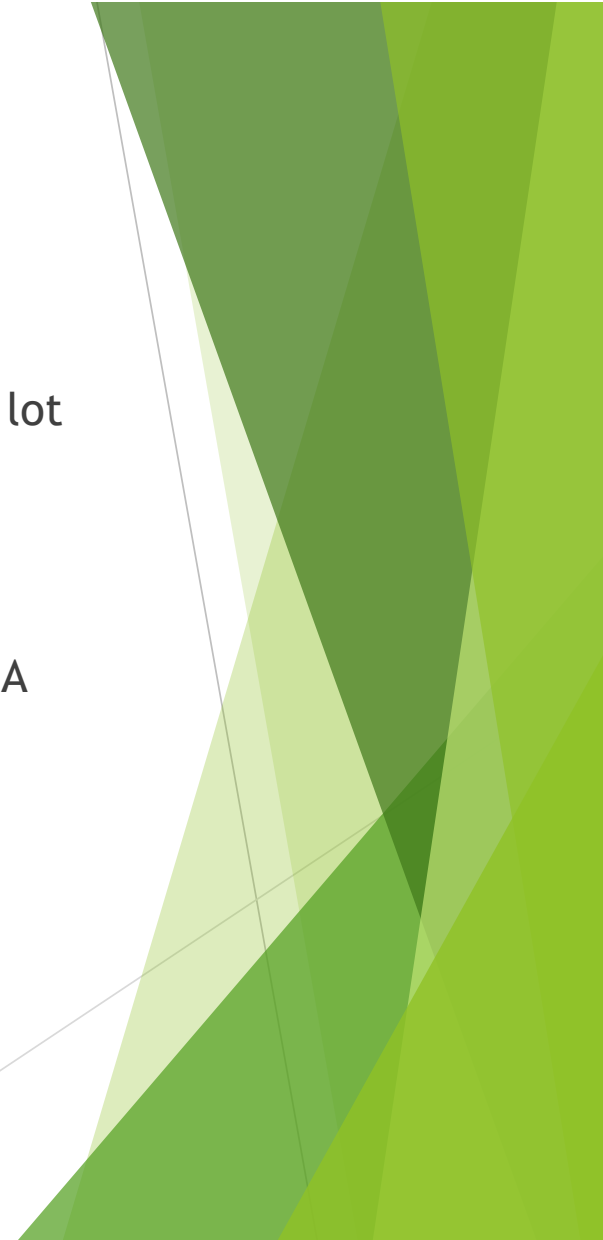
- ▶ General - the initiative, outputs of the research
  - ▶ What worked is the “standing” of the project, the size of the sample, the support by key international & local role players
  - ▶ The leadership & dedication of the teams
  - ▶ The research process and outputs
  - ▶ The impact focus
- ▶ Invaluable: Awareness raising & motivation in SA
  - ▶ Sharing, policy briefs
  - ▶ Engagement sessions
  - ▶ Funding to support impact, engagements
  - ▶ Support for a community of practice in SA



# Reflections on Value & Lessons

## ▶ Research outputs

- ▶ Maybe less about ‘highlighting something new’ but definitely a lot in terms of confirmation for what has been ‘street knowledge’ / practice experience
- ▶ The value of scaling & sharing research
- ▶ Enabling voicing critical issues impacting planning practice in SA
  - ▶ Enable engagement with range of role players in highly complex planning & intergovernmental system



# High Impact Areas that SAPER is contributing to

- ▶ **ONE: Challenges of in-appropriate/non-context specific systems in planning practice in SA**
  - ▶ Land-use management, credibility of systems eg development control for settlement development
- ▶ **TWO: The plight of young planners**
  - ▶ The need for mentoring
  - ▶ Supervision & Professional registration
  - ▶ Opportunities & challenges



# High Impact Areas that SAPER is contributing to

## ▶ THREE: Difference diversity

- ▶ In addition to existing outputs - Co-supervised Postgraduate Students (5) at University of Pretoria who used SAPER data as part of research for mini-dissertations - given that they could not undertake primary research
- ▶ Questions Raised: How interpret & lenses? How voice?
- ▶ Two examples

### ***Siyabonga Njeke***

*Exploring the role of diverse backgrounds, identity and culture on the ability of planners*

*"I noticed that my fellow colleagues often battled with conducting consultation processes with traditional leaders and their communities. It was when I enquired as to why it was difficult for my colleagues to undertake these engagements?.... It then became clear to me that background and culture play a critical role in the development of a professional."*

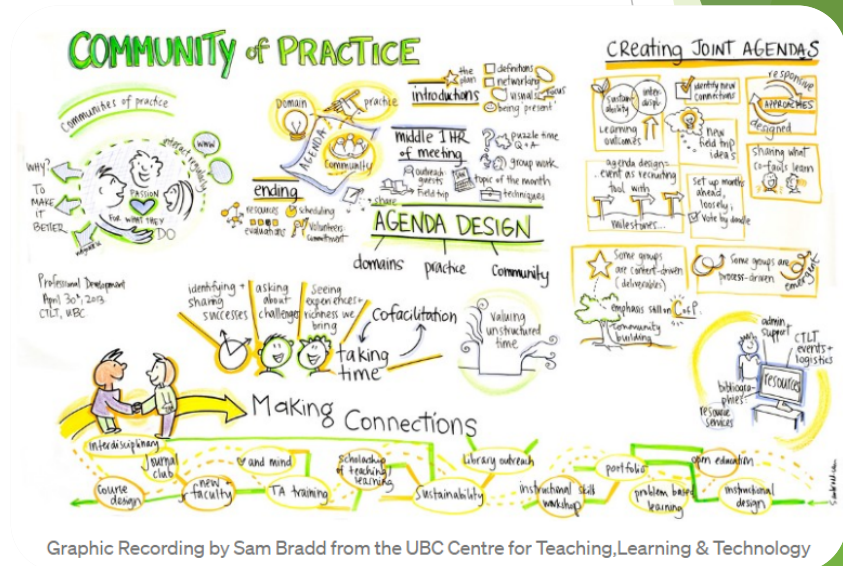
### ***Basetsana Maponya***

*The contribution of black female planners to urban and regional planning in South Africa: An explorative study on how planning practitioners of different racial and gender identities approach inclusive planning*



# Three areas where SAPER SHOULD/COULD have impact

- ▶ TWO: Moving beyond a 'individual' view
  - ▶ Distributed capacity
  - ▶ Implications for community of practice, teams
  - ▶ Capacity development support for communities of practice, teams



Graphic Recording by Sam Bradd from the UBC Centre for Teaching, Learning & Technology





# Reflections on Value & Lessons

- ▶ Personal value
  - ▶ People,
  - ▶ Personal passion (post-doc)
  - ▶ Challenge remaining - Opportunities for writing/sharing
  - ▶ Perspectives, Learning
  - ▶ Findings ways to continue journey

